

# Almería



Servicio Andaluz de Empleo  
CONSEJERÍA DE EMPLEO, EMPRESA Y COMERCIO



UNIVERSIDAD DE ALMERÍA



## Lorena Cortés Villena

- From Málaga - Teacher of Spanish and French
- Moved to the UK to teach with Uteach in September 2015
- Returned to Spain in February 2017 as Resource Executive for Uteach in Spain.

**I want to share my Uteach experience with you!**



- WHY MOVE TO THE UK
- DIFFERENCES IN THE SPANISH & ENGLISH EDUCATION SYSTEM
- HOW WILL UTEACH SUPPORT YOU?
- UTEACH FINANCIAL SUPPORT
- TESTIMONIOS
- BREXIT
- ADDITIONAL UTEACH RESOURCES



# WHY MOVE TO THE UK?

---



# WHY MOVE TO THE UK?

To teach in a **GREAT SCHOOL** in the UK.

To improve your **ENGLISH**

To find out the **SIMILARITIES** between the Spanish and the UK education systems

To **INCREASE** your chances of getting a **JOB** back in Spain in an English school

**Fantastic life EXPERIENCE**



**Uteach**  
Teacher Placement & Retention



# UTEACH recognise the daily challenges Spanish teachers face:

Problems  
creating your  
own lessons

OVERWORKED

Worried about  
pressure in the  
classroom

New to the  
UK  
Curriculum



# DIFFERENCES IN THE SPANISH & ENGLISH EDUCATION SYSTEM

---



# DIFFERENCES BETWEEN SPANISH AND ENGLISH EDUCATIONAL SYSTEM

## Spanish System

### CHILD PROTECTION

In Spain they don't have a so strict child protection policy as you have in UK.

### BEHAVIOUR MANAGEMENT

In Spain the behaviour management it is done in a different way with less patterns and rules to follow.

### BOOKS

In Spain nearly all schools either primary or high schools use books.

### LESSON PLAN

In Spain they don't divide the lesson in so many parts and don't make so much differentiation in the same class.

## English System

### CHILD PROTECTION

In England the child protection policy it's very important and you have to be very aware of it. For example never be alone with a child in a room or a closed space.

### BEHAVIOUR MANAGEMENT

In England there are really clear patterns and rules to follow in the management of behaviour with children and teens.

### NO BOOKS

In England most of the schools don't use books. That means that in England you have to make classes through presentations.

### LESSON PLAN IN ENGLAND

Think different objectives for the different levels of the class.

The structure of a lesson in England is the following:

1. Starter: Approach activity.
2. Lesson: Main concept.
3. Plenary: Summarize activity.





# HOW WILL UTEACH SUPPORT YOU?



Our unique support will give you the tools, skills and confidence to tackle your workload, hit the ground running and excel at teaching:

## PREPARATION

- Uteachers have full access to our Learning Management System.

## LESSONS

- From September 2017 Uteach will provide ALL our Uteachers with LESSONS for the full school year.

## MENTORS

- Every teacher is allocated an experienced teacher in their own subject who acts as a mentor for the duration of the placement.



# UTEACHERS ARE ASSIGNED A SUBJECT SPECIFIC BOURNE EDUCATION MENTOR

## Uteach Mentors

Every Uteacher is allocated an experienced teacher in their own subject who acts as a mentor for the duration of their placement.

Our mentors assist with lesson planning, reviewing lessons and providing suitable resources for your classes.

Each one is a highly skilled and experienced education professional dedicated to ensuring every teacher who signs up with Uteach is ready to hit the ground running and will be fully supported throughout their Uteach placement.

Our strategic training partnership with Academy Group The Bourne Education Trust means Uteachers have the all of the resources and training they need to fulfil their potential.



**Alex Russell**

Chief Executive Officer of the Bourne Education Trust, Headteacher of Epsom and Ewell High School and a National Leader of Education.

## SCIENCE



## ICT/ FOOD TECH



## ENGLISH



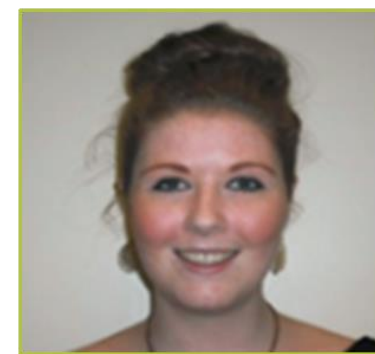
## MATHS



## PRIMARY



## ART/ DT



## MFL

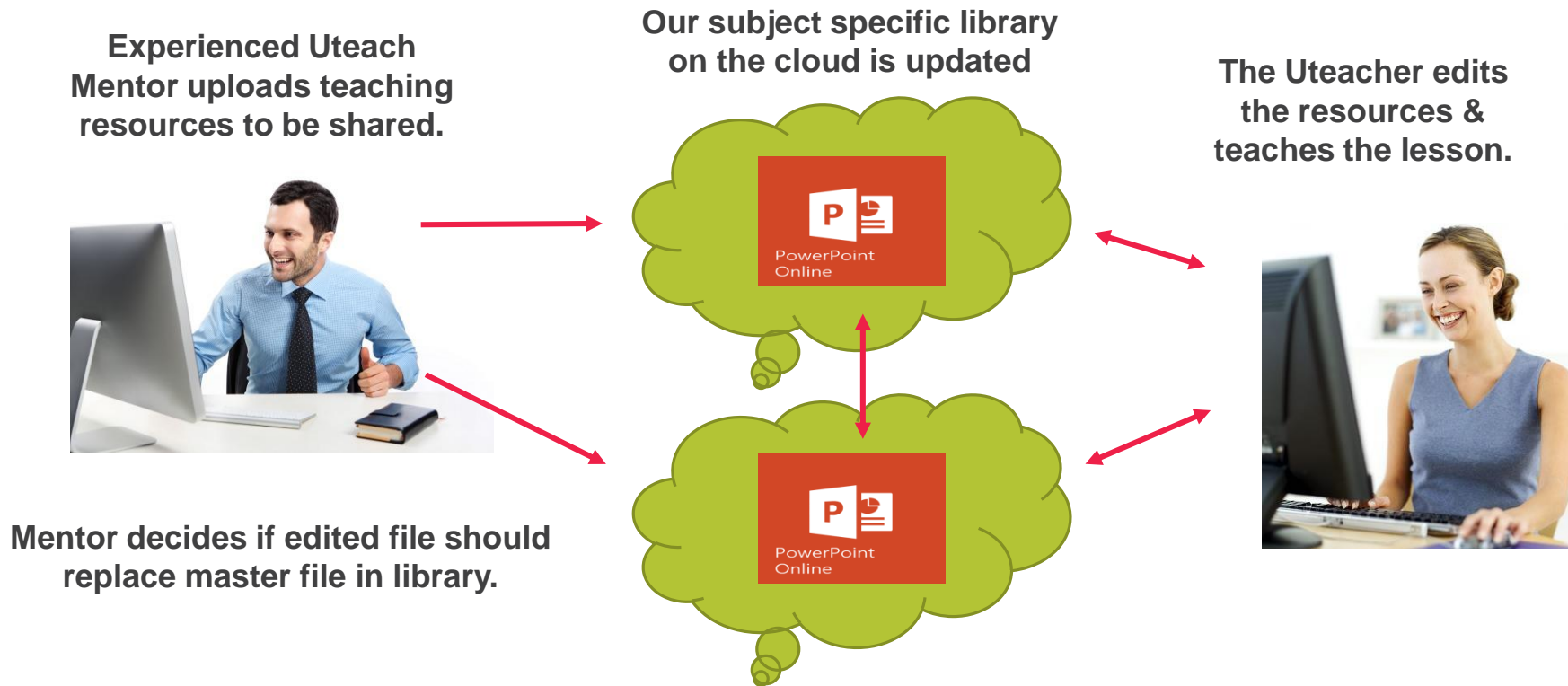


## 1:1 INTERVIEW PREP

- ✓ Individual preparation with our interview specialists.
- ✓ Model answers for interview questions.
- ✓ Practice interview questions and discuss the lesson you will be teaching.



# UTEACH PROVIDE TEACHERS WITH FIRST CLASS LESSONS TO DELIVER IN CLASS



KEY FEATURES OF LESSONS & TEACHING RESOURCES THAT UTEACH SUPPLY:

**REDUCES YOUR WORKLOAD**

Easy to  
find

High  
quality

Up to  
date

Complete  
library of  
lessons

No cost to  
the teacher





# EXAMPLE - LMS GCSE BIOLOGY



Active users  
40/1000

Contact us  
Get more users

Sign Out

Home > Welcome > My Courses > GCSE Biology > Training material



## GCSE Biology

LEARNER VIEW ADMIN VIEW

- GCSE Biology
  - Unit 1
    - adaptations
    - biomass
    - cloning and GM
    - decay
    - diet
    - drugs
      - Resources
    - environment
    - evolution
    - genes
    - hormones and control
    - infections
    - nervous system
    - The Nervous System & Hormones
      - Resources
    - fighting disease
    - Variation & Reproduction
    - revision

- Biology GCSE - B1 - Drugs
- Biology GCSE - B1 - Drugs - Drugs Lesson One PPT
- Biology GCSE - B1 - Drugs - Drugs Lesson Two PPT
- Biology GCSE - B1 - Drugs - Drugs Lesson Three PPT
- Biology GCSE - B1 - Drugs - Drugs Lesson Four PPT
- Biology - Unit1 - Drugs - Performance-enhancing Drugs PPT
- Biology GCSE - B1 - Drugs - Drug Testing and Trials PPT
- Biology GCSE - B1 - Drugs - Drugs computer work PPT
- Biology GCSE - B1 - Drugs - Drugs Exam Lesson PPT
- Biology GCSE - B1 - Drugs - Drugs Exam Questions PPT
- Biology GCSE - B1 - Drugs - Drugs Revision Lesson PPT
- Video - Lesson: Cannabis

# UTEACH LEARNING MANAGEMENT SYSTEM



Active users  
40/1000

Contact us  
Get more users

Sign Out

Home > Welcome

## My Courses

Filters



PLAY  
Behaviour Management

E-Learning



PLAY  
Compulsory Interview Preparation

E-Learning



PLAY  
GCSE Biology

E-Learning



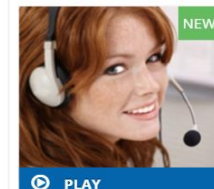
PLAY  
GCSE Physics

E-Learning



PLAY  
KS4 Maths

E-Learning



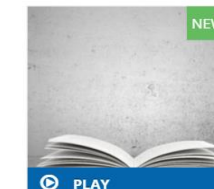
PLAY  
Meeting Rooms

E-Learning



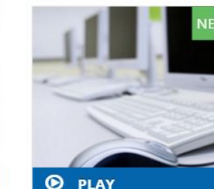
PLAY  
Teaching Examples

E-Learning



PLAY  
Teaching in England (Advanced)

E-Learning



PLAY  
UK Teaching Practice (Advanced)

Webinar



PLAY  
UK Teaching Practice (Pre Interview)

Webinar



# UTEACH FINANCIAL SUPPORT

---





# EURES and Uteach

**Eures is a network designed to facilitate the free movement of workers within the European Economic Area.**

**As a teacher coming to the UK, you could be eligible for funding to help you move to the UK.**



## EURES SUPPORT

- Eures provides funding of €1,000 to help you move to the UK.
- Apply through Eures and you can receive funding of €300 for travelling to attend interviews in the UK.
- For any questions on Eures financial packages available please contact [Roberta@uteachrecruitment.com](mailto:Roberta@uteachrecruitment.com)



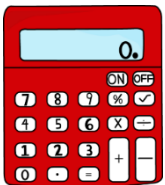
# INCREASE YOUR TAKE HOME PAY



Uteach pay increased rate compared to direct with school.



Joining the school directly, you will likely have to **pay into** a pension scheme which will **reduce your take home pay** now and **not benefit** you in the long-run if you do not plan to stay in the UK.



Work out your take home pay and see the comparison to joining the school directly by using the only teacher online pay calculator here:

<http://www.uteachrecruitment.co.uk/salary-computation>.



## TAKE HOME PAY COMPUTATION

Teaching in the “Standard” area of London  
Your take-home pay increases by joining Uteach as follows:

PAY RATE	WITH UTEACH	DIRECT AT SCHOOL	TAKE HOME PAY INCREASED
M1	€ 21,879	€ 19,827	€ 2,052

*\*Please note: exchange rates may vary\**



# SALARY INFORMATION: STARTING SALARY (M1)

Area	Annual Salary	Take-Home Pay
Inner London	£28,080 €31,539	£23,192 €26,049
Outer London	£26,130 €29,349	£21,866 €24,599
Fringe	£23,595 €26,501	£20,143 €22,624
Rest of England	£22,620 €25,406	£19,480 €21,879

*\*Please note: exchange rates may vary\**



Helping you when you need it most.

- Weekly Pay
- Interest free loan - puts €645 in your bank on week 1.



# TESTIMONIOS

---



## TESTIMONIOS

José Ángel Muntó Duran – Universitat de València

<https://www.youtube.com/watch?v=DeBEr-jo20g>



Víctor Lázaro Gimeno – Universitat de València

<https://www.youtube.com/watch?v=Uk13RUIYyi0>





# BREXIT

---



## HOW DOES IT AFFECT A SPANISH TEACHER COMING TO TEACH IN ENGLAND FOR 2017/2018?



# BREXIT TIMETABLE HAS NO EFFECT ON TEACHERS IN 2017/18 ACADEMIC YEAR

Trigger article 50-Spring 2017



Minimum period for leaving  
is 2 years=Spring 2019



Philip Hammond, now Chancellor, wanted  
Britain to remain in the EU, and he has  
suggested **it could take up to six years**  
for the UK to complete exit negotiations.



2 years to  
agree and  
4 years to  
ratify



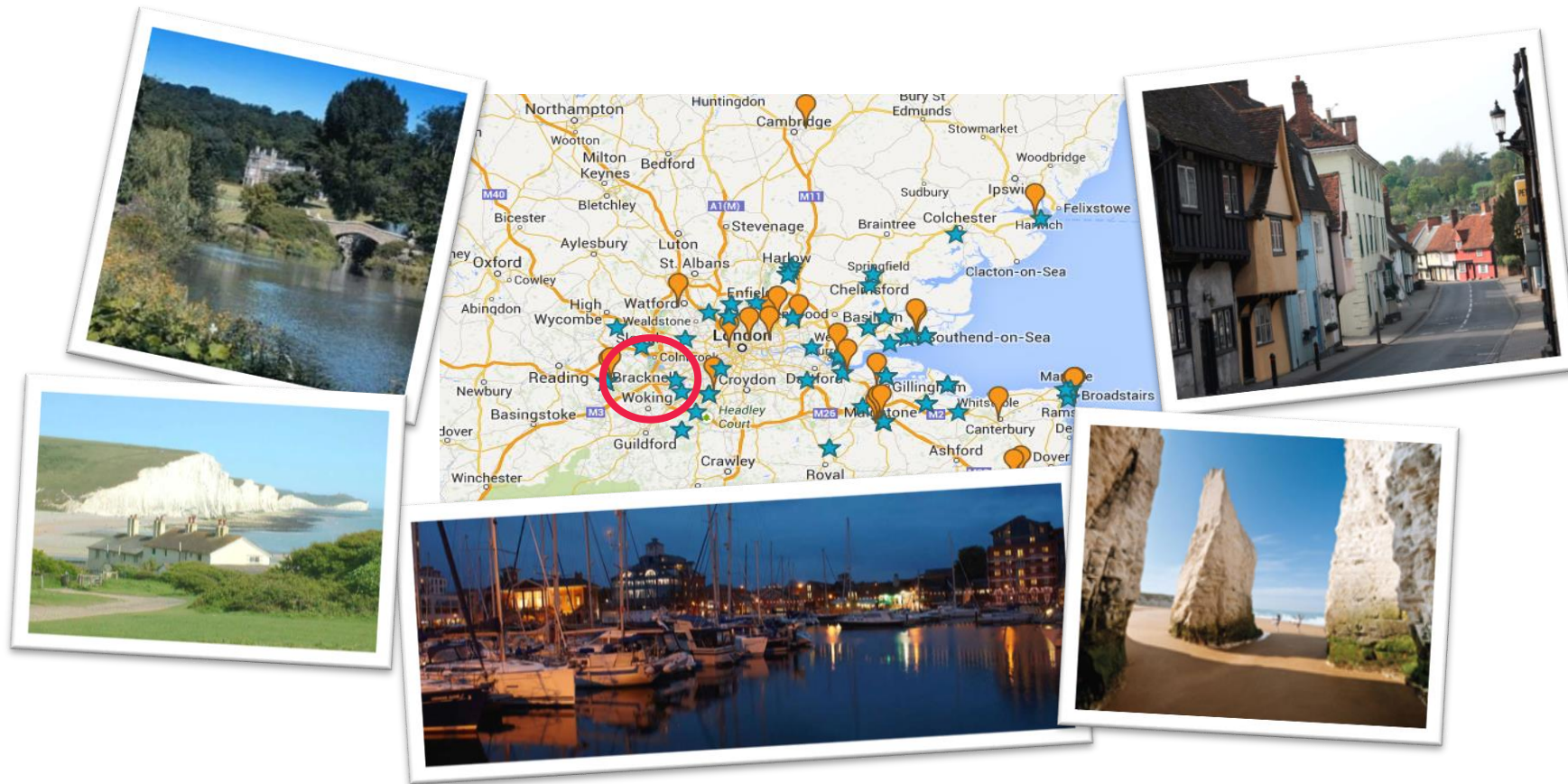
# ADDITIONAL UTEACH RESOURCES







# CONNECTING TEACHERS IN THE SAME AREA



# QUESTIONS?



Email:

[lorena@uteachrecruitment.com](mailto:lorena@uteachrecruitment.com)

[spain@uteachrecruitment.com](mailto:spain@uteachrecruitment.com)

Phone Number:

+34 673 500 625

[facebook.com/Uteach Spain](https://facebook.com/Uteach Spain)

[Twitter.com/Uteach Spain](https://twitter.com/Uteach Spain)

[www.uteachrecruitment.com](http://www.uteachrecruitment.com)



# SEND YOUR CV

---

**lorena@uteachrecruitment.com**  
**or**  
**spain@uteachrecruitment.com**

**WITHOUT YOUR CV THERE IS  
NOTHING WE CAN DO FOR YOU**





# UTEACH JOB PORTAL

15 Computing, 30 Maths, 27 Primary and 38 Science jobs AVAILABLE

Teaching Subject

Art

4

Business Studies

7

Computing

12

Design and Technology

12

Drama

1

Early Years

2

Electrical

1

English

12

Food Technology

2

Geography

17

History

7

Humanities

3

Maths

29

Modern Foreign Languages

8

Music

1

PE

1

Primary

27

RE

3

Science

37

Sociology

1

Show Less Subjects

Uteach Teacher Placement & Retention

Open Jobs

Added - a day ago

Science Teacher General

Science

Dartford, Kent | 1Year Contract with Option

Science Teacher Required for a Boys Grammar School in Kent Salary: Main Pay Scale, Fringe (calculate your pay here) Start Date: April 2017 Contract Length: one year with the possibility of being extended About the school This Boys Grammar school is for students aged 11-18 and has approximately 911 students. The school governors have a strong belief in maintaining the schools ethos of being a caring and sharing environment in which to work and study. They firmly believe that every student should be given the opportunity to achieve the highest standards possible, both educationally and in terms of personal development during their time at the school. They closely monitor and support the Head Teacher and the rest of the schools leadership team to ensure they promote and set high expectations in all aspects of their work. They test the schools improvement planning and self-evaluation

Added - a day ago

Primary Teacher

Primary

Harlow, Essex | 1Year Contract with Option

Primary (Year 2) Teacher required for a Maternity post in a Primary School in Essex Salary: Main Pay Scale, Fringe (calculate your pay here) Start Date: May 2017 Contract Length: one or two years with the possibility of being extended About the school This School are committed to giving every child the opportunity to achieve their full potential and celebrate their uniqueness, equipping them with the necessary skills to embrace the fast changing world of the 21st century. The Headteacher aims to recruit the best teachers and support staff, subject specialists and coaches in order to provide academic excellence combined with a wide range of extracurricular opportunities and strong pastoral support in a high quality setting. The DFE visited the school in June 2016 and praised the quality specialist teaching, consistent practice across the school, staff speaking positively about the support they receive

Added - a day ago

English Teacher

English

Bury St Edmunds, Suffolk | 1Year Contract with Option

English Teacher Required for a Catholic Secondary School in Suffolk Salary: Main Pay Scale, Standard (calculate your pay here) Start Date: September 2017 Contract Length: 1 Year with the possibility of being extended About the school This school are a high achieving, caring, learning community with a distinctive Catholic ethos. This enables them to underpin everything they do with their core values of Faith, Respect, Service, Responsibility, Justice and Compassion. The school welcome children from all backgrounds, abilities, faiths and those of no faith. They are an excellent school with a fabulous sixth form of which they are very proud. The school caters for children aged 11 18 over two centres. Years 7 8 are based at the Lower school centre and Years 9 13 at the Upper School centre. This enables the school to provide specialised provision for individual age ranges successfully. They

Added - a day ago

Maths Teacher

Maths

Bury St Edmunds, Suffolk | 1Year Contract with Option

Maths Teacher Required for a Catholic Secondary School in Suffolk Salary: Main Pay Scale, Standard (calculate your pay here) Start Date: September 2017 Contract Length: 1 Year with the possibility of being extended About the school This school are a high achieving, caring, learning community with a distinctive Catholic ethos. This enables them to underpin everything they do with their core values of Faith, Respect, Service, Responsibility, Justice and Compassion. The school welcome children from all backgrounds, abilities, faiths and those of no faith. They are an excellent school with a fabulous sixth form of which they are very proud. The school caters for children aged 11 18 over two centres. Years 7 8 are based at the Lower school centre and Years 9 13 at the Upper School centre. This enables the school to provide specialised provision for individual age ranges successfully. They

Added - a day ago

Primary Teacher

Primary

Harlow, Essex | 1Year Contract with Option

Year 1 Teacher Required for a Primary School in Essex Salary: Main Pay Scale, Fringe (calculate your pay here) Start Date: September 2017 Contract Length: one or two years with the possibility of being extended About the school This School are committed to giving every child the opportunity to achieve their full potential and celebrate their uniqueness, equipping them with the necessary skills to embrace the fast changing world of the 21st century. The Headteacher aims to recruit the best teachers and support staff, subject specialists and coaches in order to provide academic excellence combined with a wide range of extracurricular opportunities and strong pastoral support in a high quality setting. The DFE visited the school in June 2016 and praised the quality specialist teaching, consistent practice across the school, staff speaking positively about the support they receive from the school

Added - a day ago

Primary Teacher

Primary

Harlow, Essex | 1Year Contract with Option

Year 1 Teacher Required for a Primary School in Essex Salary: Main Pay Scale, Fringe (calculate your pay here) Start Date: September 2017 Contract Length: one or two years with the possibility of being extended About the school This School are committed to giving every child the opportunity to achieve their full potential and celebrate their uniqueness, equipping them with the necessary skills to embrace the fast changing world of the 21st century. The Headteacher aims to recruit the best teachers and support staff, subject specialists and coaches in order to provide academic excellence combined with a wide range of extracurricular opportunities and strong pastoral support in a high quality setting. The DFE visited the school in June 2016 and praised the quality specialist teaching, consistent practice across the school, staff speaking positively about the support they receive from the school



# UTEACH PACK

**Example CV**

**Brochure**

**Sparkhire Guide & Tips**

**Salary Information Sheet**

**EURES Funding**

**Uteach Pen**

